

OWNER  
MALWOOD P/L  
FOLIO REFERENCE CT154003/1  
GRANTEE  
PART OF 730 ACRES GTD TO FRANCIS  
BUTLER & JUSTIN MCCARTHY BROWNE

**PLAN OF SURVEY**  
BY SURVEYOR TERENCE S CROMER  
PO Box 368, Sandy Bay, 7006  
Ph 622 55366 Fax 622 55388  
e-mail [terry@cromer-partners.com.au](mailto:terry@cromer-partners.com.au)  
[www.cromer-partners.com.au](http://www.cromer-partners.com.au)  
LOCATION  
**CITY OF CLARENCE**

Registered Number  
**PRELIMINARY COPY  
NOT EXAMINED BY LTO  
EASEMENTS TO BE  
CONFIRMED**

APPROVED  
EFFECTIVE FROM.....

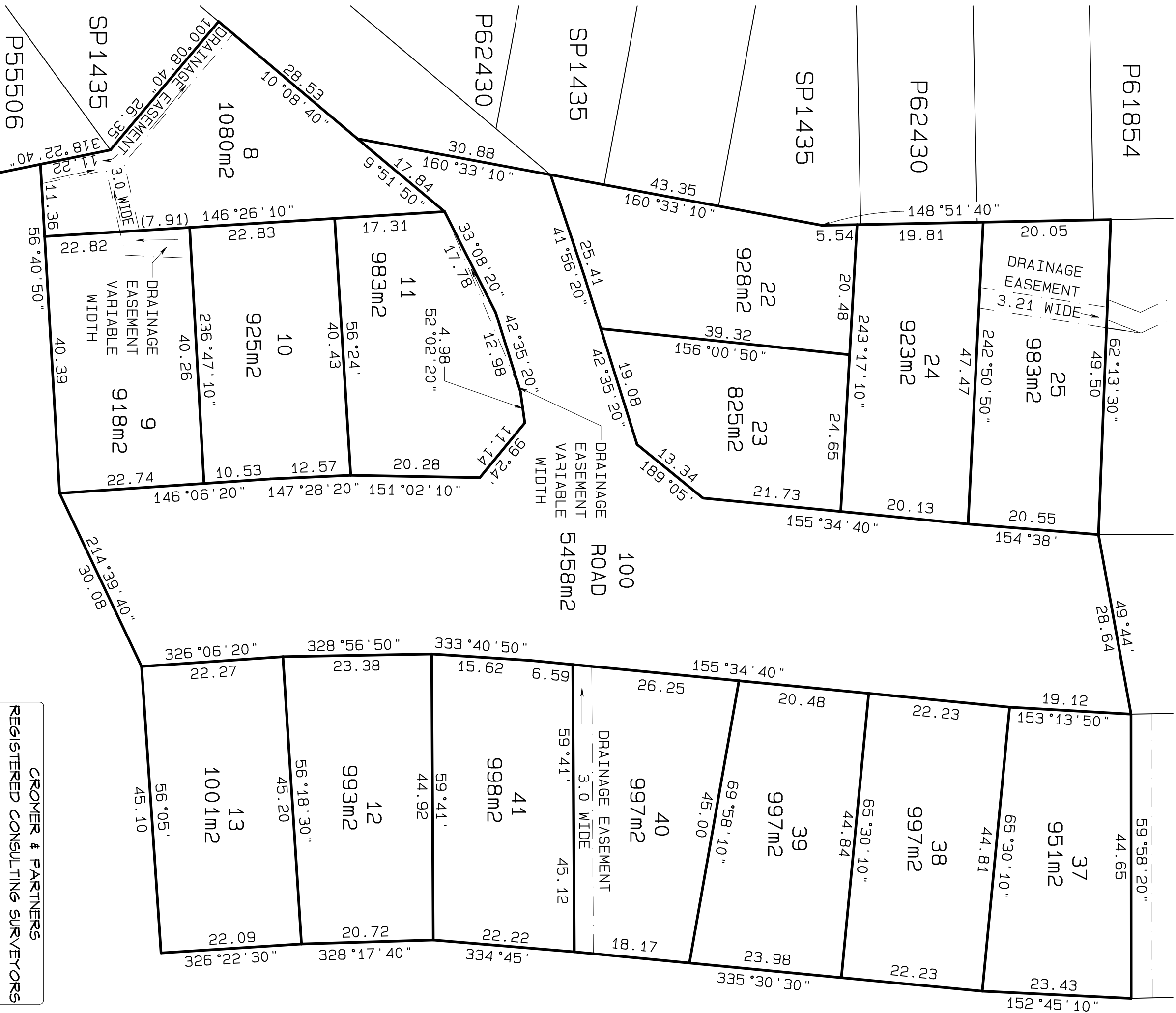
SCALE 1:600 LENGTHS IN METRES

Recorder of Titles

MAPSHEET MUNICIPAL  
CODE NO. LAST UPI No.

LAST PLAN  
No. P148473

ALL EXISTING SURVEY NUMBERS TO BE  
CROSS REFERENCED ON THIS PLAN



COUNCIL DELEGATE DATE

**CROMER & PARTNERS**  
REGISTERED CONSULTING SURVEYORS  
PO BOX 368, SANDY BAY, 7006  
PH 6225 5366, FAX 6225 5388  
[ccromer@bigpond.net.au](mailto:ccromer@bigpond.net.au)  
[www.cromer-partners.com.au](http://www.cromer-partners.com.au)  
FOR OTHER SERVICES OFFERED